



S IP9165-LPC-v2 series Box Network Camera



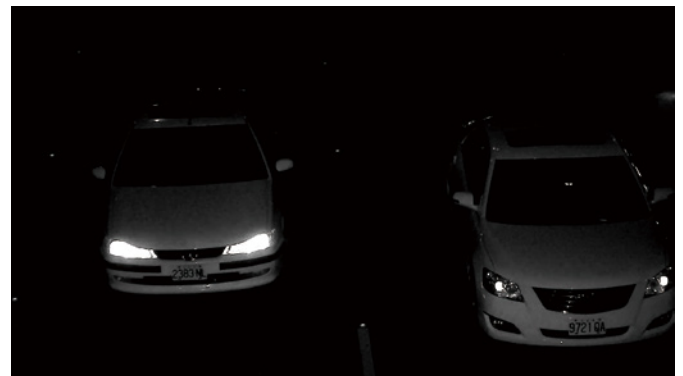
2MP 60fps • SNV II • WDR Pro II • Remote Back Focus •
License Plate Capture • Smart VCA • i-CS

VIVOTEK's IP9165-LPC-v2 is a professional H.265 Full HD box network camera with new generation SoC and embed 2 GB RAM and 8 GB storage offering specialized solutions for License Plate Capture with a unique headlight filter design for traffic monitoring. Featuring dedicated LPC firmware and a compatible lens, the IP9165-LPC-v2 provides three different scene modes: LPCParking, LPC-Street, and LPC-Highway to match different traffic applications in which cars move at different speeds. With a suitable selection of external IR illuminators, the IP9165-LPC-v2 camera will be ideal for 24/7 license plate capture, producing high-detail polished images for reliable license plate recognition of cars traveling up to speeds of 110mph (180km/h).

Equipped with its bundled lens and headlight filter design, the camera is capable of capturing clear, high quality video with a resolution of 1920x1080 at a smooth 60 fps in any condition. Further, by employing VIVOTEK's WDR Pro II, 3DNR and SNV II technologies, no matter whether in high contrast or in low light environments, the camera will ensure clear image quality for license plate capture or traffic monitoring. Finally, VIVOTEK's RBF (Remote Back Focus) system for easy focus adjustments and value-added features like EIS and support for i-CS lens ensure image stability and intelligent, precise focus, and in conjunction make the IP9165-LPC-v2 the perfect LPR solution for any application, in any condition.

Key Features

- 60 fps @ 1920x1080
- H.265 Compression Technology
- i-CS (intelligent-CS) lens supported
- SNV II (Supreme Night Visibility II) for Low Light Conditions
- WDR Pro II (140dB) to Provide Extreme Visibility in Extremely Bright or Dark Environments
- Smart Stream III to Optimize Bandwidth Efficiency
- EIS (Electronic Image Stabilization) to Control Image Stability
- Video Rotation for Corridor View
- Lens Profile for Camera Quality Optimization
- Trend Micro IoT Security



Supreme Anti-Glare Capability:
Clear Image Captured with IR Illuminators and Headlight Filter

Technical Specifications

Model Name	IP9165-LPC-v2(9-50m) IP9165-LPC-v2(12-40mm)
System Information	
CPU	Multimedia SoC (System-on-Chip)
Flash	8 GB
RAM	2 GB
Camera Specifications	
Image Sensor	1/2" Progressive CMOS
Max. Resolution	1920x1080 (2MP)
Lens Type	IP9165-LPC-v2(9-50m): Vari-focal, Remote Focus(i-CS) IP9165-LPC-v2(12-40mm): Vari-focal, Manual Focus
Focal Length	IP9165-LPC-v2 (9-50mm): f = 9 ~ 50 mm IP9165-LPC-v2 (12-40mm): f = 12 ~ 40 mm
Aperture	IP9165-LPC-v2(9-50mm): F1.5 ~ F1.6 IP9165-LPC-v2(12-40mm): F1.8 ~ F2.3
Iris Type	IP9165-LPC-v2(9-50mm): i-CS IP9165-LPC-v2(12-40mm): P-iris (i-CS/P-iris/DC-iris all reserved)
Field of View	IP9165-LPC-v2(9-50mm): 42.8° ~ 8.3° (Horizontal) 24.3° ~ 4.7° (Vertical) 48.9° ~ 9.46° (Diagonal) IP9165-LPC-v2(12-40mm): 34.2° ~ 11.6° (Horizontal) 18.7° ~ 6.6° (Vertical) 39.8° ~ 13.3° (Diagonal)
Shutter Time	1/5 sec. to 1/32,000 sec.
WDR Technology	WDR Pro II
Day/Night	Yes
Removable IR-cut filter	Yes (Headlight filter design for Anti-Glare)
Minimum Illumination	IP9165-LPC-v2(9-50mm): 0.01 lux @ F1.5 (Color) IP9165-LPC-v2(12-40mm): 0.08 lux @ F1.8 (Color)
Pan/Tilt/Zoom Functionalities	ePTZ: 48x digital zoom (4x on IE plug-in, 12x built in)
Storage	Seamless Recording to MicroSD/SDHC/SDXC card and recording to network-attached storage (NAS)
Video	
Compression	H.265, H.264, MJPEG
Maximum Frame Rate	60 fps @ 1920x1080
Maximum Streams	3 simultaneous streams
S/N Ratio	66.2 dB
Dynamic Range	140 dB
Video Streaming	Adjustable resolution, quality and constant bit rate control; Smart Stream III

Image Settings	General settings: video title and time stamp overlay, video orientation (flip, mirror, rotation), day/night settings; Illuminators: illuminators, anti-overexposure; Image settings: white balance, image adjustment (brightness, contrast, saturation, sharpness, gamma curve), defog, 3DNR, EIS, scene mode (auto, deblur); Exposure: BLC, HLC, exposure control (exposure level, iris adjustment, exposure time, gain control, iris mode), AE speed adjustment, WDR; Focus: zoom, Remote focus(i-CS), Remove back focus; Privacy mask; Scheduled profile settings
Audio	
Audio Capability	Two-way audio (Full duplex)
Compression	G.726, G.711
Interface	External microphone input External line output
Network	
Users	Live viewing for up to 10 clients
Security	Access list, digest authentication, HTTPS, IEEE 802.1x, password protection, secure boot, signed firmware, Trend Micro IoT Security (brute force attack event, cyberattack event, quarantine event), user access log, user account management
Protocols	802.1X, ARP, Bonjour, CIFS/SMB, DDNS, DHCP, DNS, FTP, HTTP, HTTPS, ICMP, IGMPv3, IPv4, IPv6, NTP, PPPoE, QoS (CoS/DSCP), RTSP/RTMP/RTCP, SMTP, SNMP, SSL, SFTP, TCP/IP, TLS 1.2, UDP, UPnP
Interface	10 Base-T/100 Base-TX/1000 Base-T Ethernet (RJ-45) *It is highly recommended to use standard CAT5e & CAT6 cables which are compliant with the 3P/ETL standard.
ONVIF	Profile G, S, T supported, specification available at www.onvif.org
Solution Integration	
Smart Motion Detection	Five-window video motion detection
Smart VCA	With i-CS Lens: Intrusion detection, loitering detection, line crossing detection, unattended object detection, missing object detection, face detection, crowd detection, running detection, car detection
VADP Package	Trend Micro (3-year free trial), Stratocast, Deep Learning VCA (Smart Motion Detection, Smart VCA)
Alarm and Event	
Event Trigger	Audio detection, camera tampering detection, cybersecurity events (brute force attack event, cyberattack event, quarantine event), digital input, manual trigger, motion detection, periodical trigger, recording notification, SD card life expectancy, shock detection, system boot
Event Action	Event notification via audio clip, camera link, digital output, email, HTTP, FTP/SFTP, NAS server, SD card, File upload via email, HTTP, FTP/SFTP, NAS server, SD card
General	

Technical Specifications

Connectors	RJ-45 cable connector for 10/100/1000Mbps Network/PoE connection Audio input Audio output AC 24V power input *1 DC 12V power input*1 Digital input *2 Digital output *2 RS485*1 BNC *1
LED Indicator	System power and status indicator
Power Input	AC 24V, DC 12V, IEEE 802.3af PoE Class 0
Power Consumption	AC 24V: Max. 18W DC 12V: Max. 9W PoE: Max. 9.06W
Dimensions	Without lens: 155 (D) x 70 (W) x 61 (H) mm IP9165-LPC-v2(9-50mm): 263 (D) x 78 (W) x 84 (H) mm IP9165-LPC-v2(12-40mm): 203 (D) x 70 (W) x 61 (H) mm
Weight	Without lens : 680 g IP9165-LPC-v2(9-50mm): 970 g IP9165-LPC-v2(12-40mm): 790 g
Certifications	CE, LVD, FCC Class B, VCCI, C-Tick, UL/CUL, BIS, BSMI
Operating Temperature	Starting Temperature: 0°C ~ 50°C (32°F ~ 122°F) Working Temperature: -10°C ~ 60°C (14°F ~ 140°F)
Humidity	90% (non-condensing)
Warranty	36 months

System Requirements

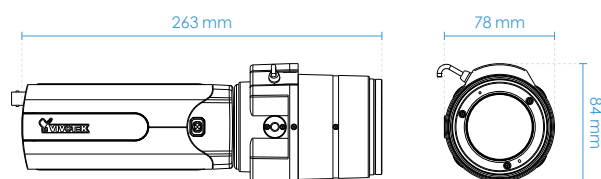
Operating System	Microsoft Windows 10/8/7 Mac 10.12 (Chrome only)
Web Browser	Chrome 58.0 or above Internet Explorer 10/11
Other Players	VLC: 1.1.11 or above

Included Accessories

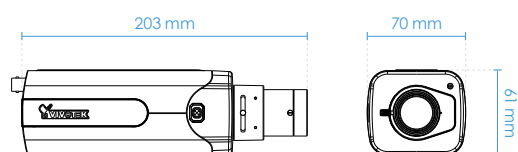
Packing Contents	Quick installation guide, lens
------------------	--------------------------------

Dimensions



IP9165-LPC-v2(9-50m)



IP9165-LPC-v2(12-40m)



Compatible Accessories

Enclosures		Lens		
 AE-23E-v2 Outdoor enclosure, PoE input, IP68, IK10	 AE-244 Outdoor enclosure, built-in 50m IR, PoE input, IP68, IK10	 AL-239 8 ~ 80 mm, F1.6, DC-iris	 AL-24A 12 ~ 40 mm, F1.8, P-iris (Standard Package)	 AL-248 12 ~ 50 mm, F1.8, P-iris
Lens				
 AL-24E 3.9~10mm, F1.5, P-iris	 AL-24F 4.4~10mm, F1.3, P-iris	 AL-251 3.9 ~ 10mm, F1.5, i-CS	 AL-252 9 ~ 50 mm, F1.5, i-CS (Standard Package)	